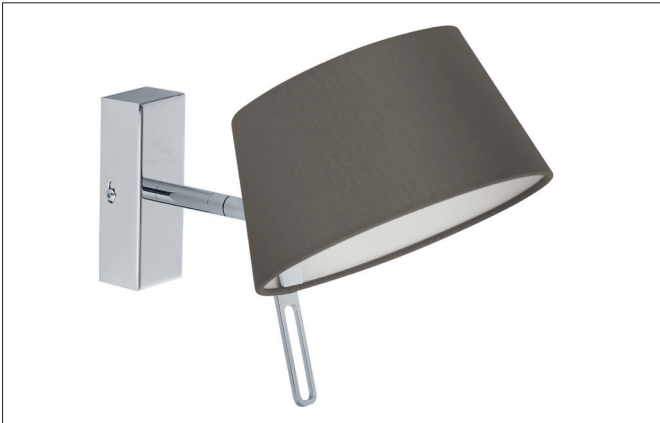


Wall surface mounted luminaire, with fabric shade
Article no. 58131150

Light.
For Generations.



Tender

Wall surface mounted luminaire, with fabric shade, nickel, Round. Surface mounting, Wall-mounted Wall surface-mounted luminaire with a fabric shade, head can be pivoted by 180°, height: 170 mm, width: 160 mm, outreach: 290 mm, shade material: chintz, surface: nickel satin. For more available shade variants and special solutions you can download a PDF file for each product online from our website. Lamp holder: G9, Mounting method: Surface mounting, Place of installation: Wall-mounted, Degree of protection: according to DIN EN 60529 IP20, Protection class: (EN 61140) I, Voltage: 230V AC 50Hz, Power: 48W, Amount of light sources / fittings: 1.0 Qty, Control:

Article data	
Article no.	58131150
GTIN	4251433920793
Short description	Wall surface mounted luminaire, with fabric shade
Material	Aluminium / Brass / Iron
Colour	Nickel
Shape	Round
Width	160 mm
Hight	170 mm
Shade colour	Brown
Shade material	Chintz
Chintz colour code	66.8003.52
Weight	0.570 kg

Wall surface mounted luminaire, with fabric shade
Article no. 58131150

Light.
For Generations.

Operating technology of the luminaire	
Voltage type	AC
AC nominal voltage max	230 V
Frequenz max.	50 Hz
Lamp holder	G9
Protection class	I
Degree of protection	IP20
Control	Other
Bulb change possible	Yes

Mounting technology	
Mounting method	Surface mounting
Place of installation	Wall-mounted
Adjustability	Pivoted

Packing data	
Gross weight	1.086 kg
Length of packaging	300 mm
Packaging width	300 mm
Packaging height	180 mm
Disposal at end of life	This product must not be disposed of with household waste. You are obliged, to dispose of such electrical waste separately. By disposing of electrical waste and other old or defective electronics separately, you support recycling or other forms of re-use. In that way you help to take care and to avoid that harmful substances get into the environment.