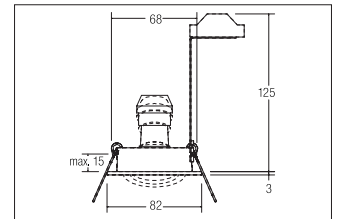
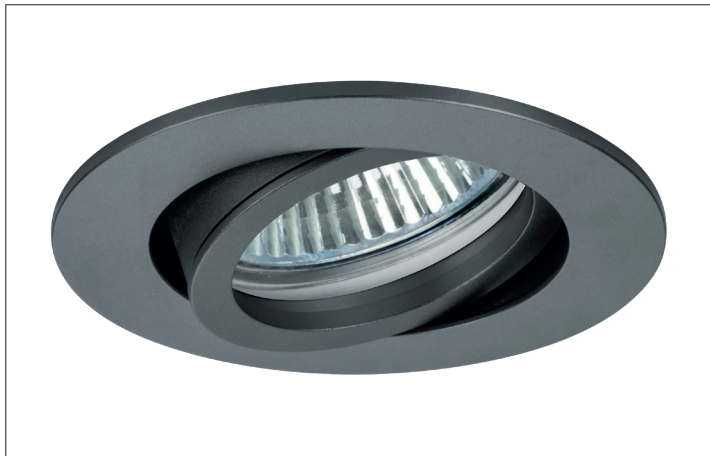


High voltage recessed spot, GU10

**Artikel-Nr. 36143640**



High voltage recessed spot, GU10, titanium, round. In a compact design, for installation in tool-less rapid assembly systems. Including bracket with GU10 socket for standard-compliant strain relief. Lamp holder: GU10, Mounting method: Recessed mounting, Place of installation: Ceiling-mounted, Material: Aluminium, Degree of protection: according to DIN EN 60529 IP20, Protection class: (EN 61140) II, Voltage: 230V AC 50Hz, Power: 50W, Amount of light sources / fittings: 1.0 Qty, Adjustability: Pivoted, With control gear: No, control: Other.

**Artikel-Nr.** 36143640  
**Stand:** 19.07.2021 12:27

Colour	Titanium
Amount of light sources / fittings	1 Qty
control	Other
Outer diameter	82 mm
Built-in diameter	68 mm
Installation depth	125 mm
Material	Aluminium
Lamp holder	GU10
Power	max. 50 W

Voltage	230V AC 50Hz
Lamp	for LED-retrofill lamp
Circuit type	Parallel conduction
Degree of protection	IP20
Protection class	II
Swivel angle	20 °
Voltage type	AC
Circlip	Without circlip
Adjustability	Pivoted