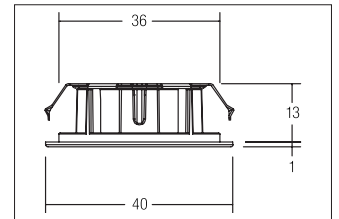
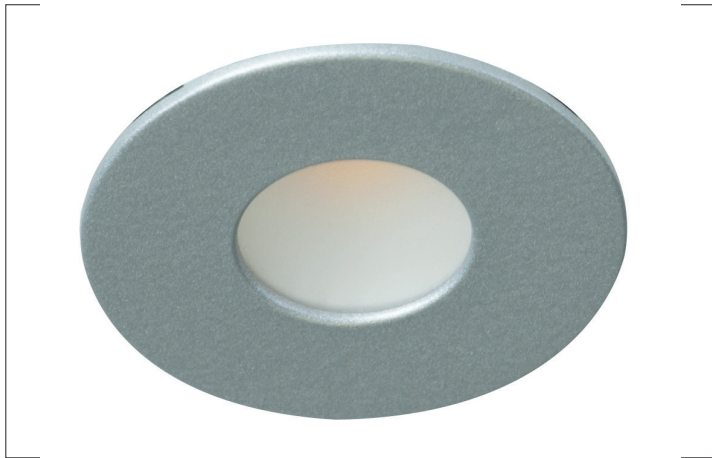


LED recessed downlight

Artikel-Nr. 12095263



LED recessed downlight, alu, round. In a compact design, for installation in tool-less rapid assembly systems. Lamp optimized for installation in furniture and wood-based materials. Mounting method: Recessed mounting, Place of installation: Ceiling-mounted, Material: Aluminium / Plastic, Degree of protection: according to DIN EN 60529 IP20, Protection class: (EN 61140) III, Voltage: 12V, Power: 2W, Amount of light sources / fittings: 1.0 Qty, Luminous flux: 175lm, Colour temperature: 3.200 K, Light colour : White, Beam angle: 45°, Control: Dimming depending on driver.

| | |
|--------------------|------------------|
| Artikel-Nr. | 12095263 |
| Stand: | 26.10.2021 02:57 |

| | |
|------------------------------------|-------------------------------------|
| Colour temperature | 3200 K |
| Colour | Alu |
| Beam angle | 45 ° |
| Amount of light sources / fittings | 1 Qty |
| Material | Aluminium / Plastic |
| Power | 2 W |
| Lamp | LED |
| scope of delivery | Including 2,000 mm connecting cable |

| | |
|----------------------|-----------------------------|
| Colour rendering | CRI 81 |
| Control | Dimming depending on driver |
| Outer diameter | 40 mm |
| Built-in diameter | 36 mm |
| Installation depth | 13 mm |
| Voltage | 12V |
| Degree of protection | IP20 |
| Protection class | III |
| Circuit type | Parallel conduction |