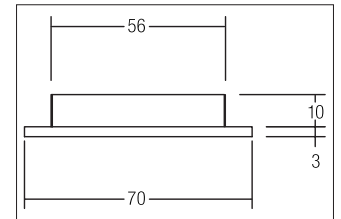
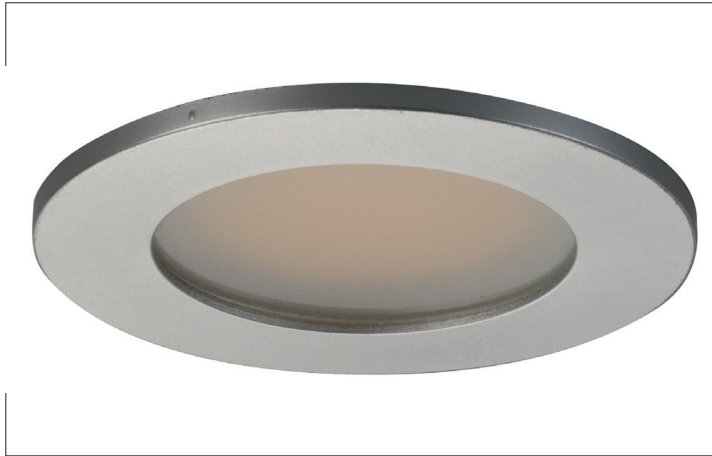


## LED recessed downlight

**Artikel-Nr. 12093263**

LED recessed downlight, alu, round. In a compact design, for installation in tool-less rapid assembly systems. Lamp optimized for installation in furniture and wood-based materials. Mounting method: Recessed mounting, Place of installation: Ceiling-mounted, Material: Cast iron / Plastic, Degree of protection: according to DIN EN 60529 IP20, Protection class: (EN 61140) III, Voltage: 12V, Power: 3.5W, Amount of light sources / fittings: 1.0 Qty, Luminous flux: 275lm, Colour temperature: 3.200 K, Light colour : White, Beam angle: 120°, Adjustability: Not adjustable, With control gear: No, Control: Dimming depending on driver.

**Artikel-Nr.** 12093263  
**Stand:** 23.09.2021 09:48

Colour temperature	3200 K
Colour	Alu
Beam angle	120 °
Amount of light sources / fittings	1 Qty
Material	Cast iron / Plastic
Power	3,5 W
Lamp	LED
Shipping	Including 2,000 mm connecting cable
Colour rendering	CRI 81

Control	Dimming depending on driver
Outer diameter	70 mm
Built-in diameter	56 mm
Installation depth	10 mm
Voltage	12V
Degree of protection	IP20
Protection class	III
Adjustability	Not adjustable
Height	3 mm
Circuit type	Parallel conduction