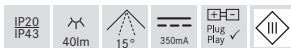
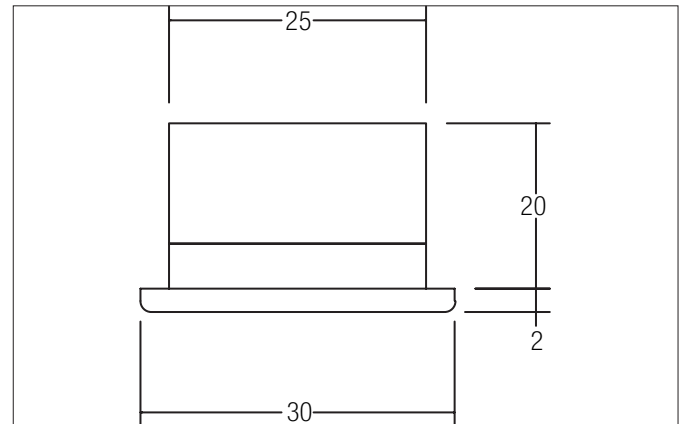


SIMTE LED light point, IP43
Article no. P3654WW

Light.
For Generations.



Tender

LED light point, IP43, chrome, Round. In a compact design, for installation in tool-less rapid assembly systems. Mounting method: Recessed mounting, Place of installation: Ceiling-mounted, Material: Aluminium / Plastic, Degree of protection: according to DIN EN 60529 IP43, Protection class: (EN 61140) III, Current: 350 mA, Power: 1.2 W, Amount of light sources / fittings: 1 Qty, Luminous flux : 40 lm, Colour temperature: 3.000 K, Beam angle: 15°, Adjustability: Not adjustable, without control gear, Dimmable: Depending on type of control gear, Control: Depending on driver.

| Article data | |
|--------------------|-----------------------|
| Article no. | P3654WW |
| GTIN | 4250047753759 |
| Series name | SIMTE |
| Short description | LED light point, IP43 |
| Material | Plastic |
| Colour | Chrome |
| Type of surface | Glossy |
| Shape | Round |
| Outer diameter | 30 mm |
| Built-in diameter | 25 mm |
| Installation depth | 20 mm |
| Height | 2 mm |
| Weight | 0.011 kg |

SIMTE LED light point, IP43

Article no. P3654WW

Light.
For Generations.

| Lighting technology | |
|---------------------|-----------|
| Colour temperature | 3.000 K |
| Light colour | White |
| Light output | Direct |
| Luminous flux | 40 lm |
| Colour rendering | CRI > 80 |
| Reflector | Without |
| Beam angle | 15° |
| Light sharing | Symmetric |

| Operating technology of the luminaire | |
|---------------------------------------|--|
| System output | 1.2 W |
| Voltage type | DC |
| Current | 350 mA |
| Lamp | LED |
| Lamp holder | Plug&Play |
| Protection class | III |
| Degree of protection | IP43 |
| Protection class on the ceiling side | IP20 |
| Dimmable | Depending on type of control gear |
| Control | Depending on driver |
| Bulb change possible | The light source of this luminaire may only be replaced by the manufacturer or a service technician commissioned by him or a similarly qualified person. |

| Mounting technology | |
|-----------------------|---|
| Mounting method | Recessed mounting |
| Place of installation | Ceiling-mounted |
| Adjustability | Not adjustable |
| stamp | UKCA |
| Further references | No cover with thermal insulation material |
| Material cover | Plastic, transparent |




| Packing data | |
|-------------------------|---|
| Gross weight | 0.027 kg |
| Length of packaging | 70 mm |
| Packaging width | 47 mm |
| Packaging height | 81 mm |
| Disposal at end of life | This product must not be disposed of with household waste. You are obliged, to dispose of such electrical waste separately. By disposing of electrical waste and other old or defective electronics separately, you support recycling or other forms of re-use. In that way you help to take care and to avoid that harmful substances get into the environment. |

| Required accessories | |
|----------------------|--|
|----------------------|--|

SIMTE LED light point, IP43

Article no. P3654WW

Light.
For Generations.

| Accessories | |
|---|--|
|  | <p>Article no.: 17648000 LED converter 350 mA, trailing-edge phase dimmable Power: 0,7 - 17 W Dimensions: 166 mm x 46 mm x 34 mm</p> |
|  | <p>Article no.: 17648010 LED converter 350 mA, trailing-edge phase dimmable Power: 0,7 - 17 W Dimensions: 166 mm x 46 mm x 34 mm</p> |
|  | <p>Article no.: 17648020 LED converter 350 mA, trailing-edge phase dimmable Power: 0,7 - 17 W Dimensions: 166 mm x 46 mm x 34 mm</p> |