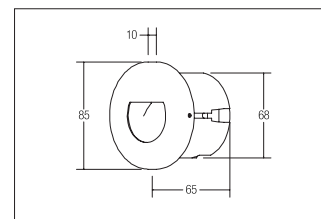
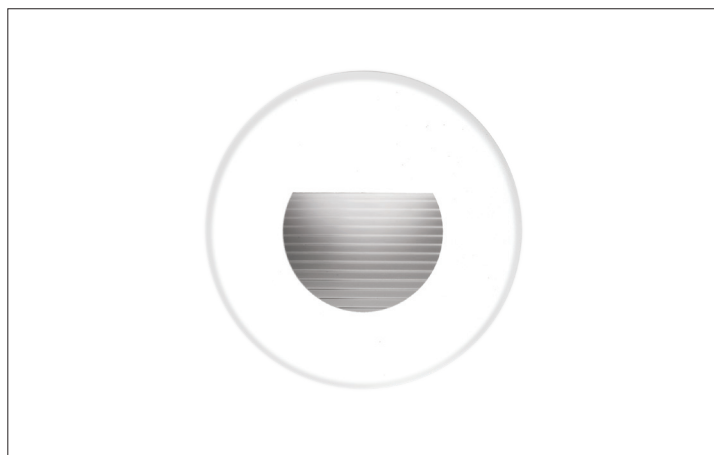


LED-Wandeinbauleuchte

Artikel-Nr. R3928W



LED-Wandeinbauleuchte, round. Flush mounting, Wall-mounted. Inkl. Konverter zum Anschluss an 230 V-Netzspannung, schaltbar, und Hohlwand-Montagedose Ø DA: 68 mm / Einbautiefe: 65 mm. Lamp holder: without, Mounting method: Flush mounting, Place of installation: Wall-mounted, material: Stainless steel / Aluminium / Plastic, IP protection class: according to DIN EN 60529 IP20, Protection class: (EN 61140) I, voltage: 230V AC 50Hz, Power: 1,20W, amount of light sources / fittings: 1.0 Stk, Luminous flux: 60lm, Farbtemperatur: 6500K, Colour of light: white, .

Artikel-Nr.	R3928W	Applications
Stand:	25.11.2020 04:18	HOME LIVING OFFICE COMMUNICATION HOTEL INDUSTRY GASTRONOMY

Energy efficiency class	A++ to A
colour of light	6500
Luminous flux	60 lm
material	Stainless steel / Aluminium / Plastic
Colour	strukturweiß
Power	1,2 W
Lamp type	LED

Built-in diameter	68 mm
Built-in depth	65 mm
voltage	230V AC 50Hz
circuit type secondary side	parallel conduction
IP protection class	IP20
Protection class	I
Voltage type	AC
Diameter	85 mm