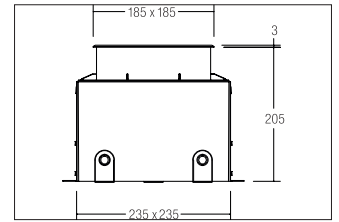
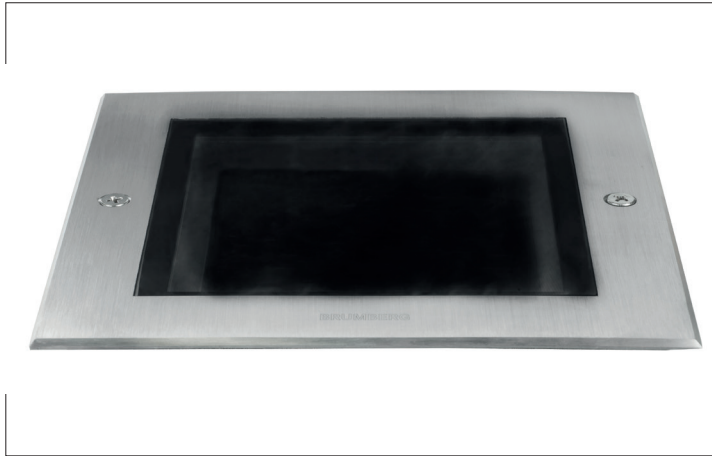


LED-Bodeneinbauleuchte HYBRIDE, V4A, IP67

**Artikel-Nr. 14672223**



LED-Bodeneinbauleuchte HYBRIDE, V4A, IP67, stainless steel. Flush mounting, Floor-mounted. Mounting method: Flush mounting, Place of installation: Floor-mounted, material: Stainless steel / Aluminium / Glass, IP protection class: according to DIN EN 60529 IP67, Protection class: (EN 61140) I, voltage: 230V AC 50Hz, Power: 10W, amount of light sources / fittings: 1.0 Stk, Luminous flux: 720lm, Farbtemperatur: 3000K, Colour of light: white, Radiation angle: 37°, With operating gear, Type of dimming: switchable, .

|                       |                  |
|-----------------------|------------------|
| <b>Artikel-Nr.</b>    | <b>14672223</b>  |
| <b>price</b>          | 399.60 €         |
| <b>Stand:</b>         | 01.09.2020 14:27 |
| <b>Discount group</b> | Discount group 1 |

|                                    |   |
|------------------------------------|---|
| colour of light                    | 3000 K  |
| Colour                             | stainless steel   |
| Radiation angle                    | 37 °  |
| amount of light sources / fittings | 1 Qty   |
| material                           | Stainless steel / Aluminium / Glass   |
| Power                              | 10 W  |
| Lamp type                          | LED   |
| shipping                           | inkl. Konverter zum Anschluss an 230 V-Netzspannung, schaltbar, Bodeneinbautopf und 5.000 mm Anschlussleitung |
| Colour rendering                   | CRI > 80  |

|                             |                     |
|-----------------------------|---------------------|
| Type of dimming             | switchable          |
| Built-in width              | 235 mm              |
| Built-in length             | 235 mm              |
| Built-in depth              | 205 mm              |
| voltage                     | 230V AC 50Hz        |
| Luminous flux               | 720 lm              |
| Max. load                   | 1,000 kg            |
| Impact strength             | IK09                |
| IP protection class         | IP67                |
| Protection class            | I                   |
| Voltage type                | AC                  |
| Length                      | 185 mm              |
| Width                       | 185 mm              |
| circuit type secondary side | parallel conduction |