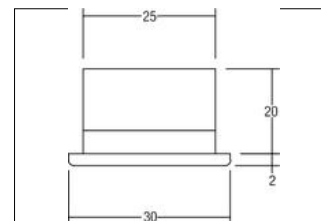


LED-Lichtpunkt, IP43  
**Artikel-Nr. P3654WW**

Licht.  
 Für Generationen.



LED-Lichtpunkt IP43, chrome. In a compact design, for installation in tool-less rapid assembly systems. . Lamp holder: Plug&Play, Mounting method: Flush mounting, Place of installation: Ceiling-mounted, material: Aluminium / Plastic, IP protection class: according to DIN EN 60529 IP43\*, Protection class: (EN 61140) III, current: 350 mA, Power: 1 W, Radiation angle: 15.0 °, Adjustability: not adjustable, Energy efficiency class: A++ to A,

<b>Artikel-Nr.</b>	<b>P3654WW</b>	<b>Applications</b>
<b>price</b>	31.10 €	HOME   LIVING OFFICE   COMMUNICATION HOTEL INDUSTRY
<b>Stand:</b>	27.08.2019 11:12	GASTRONOMY

Energy efficiency class	A++ to A
colour of light	3000 K
Luminous flux	40 lm
Radiation angle	15 °
material	Aluminium / Plastic
version	Plug&Play
Colour	chrom
Power	1 W
Lamp type	LED

Built-in diameter	25 mm
Built-in depth	20 mm
current	350 mA
circuit type secondary side	series conduction
IP protection class	IP43*
Protection class	III
Voltage type	DC
Adjustability	not adjustable
Outer diameter	30 mm