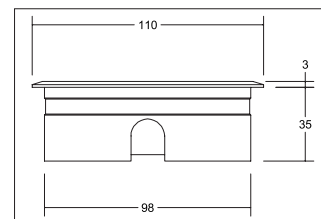


LED-Bodeneinbauleuchte HYBRIDE FLAT, V4A, IP67

Artikel-Nr. 14037223



LED-Bodeneinbauleuchte HYBRIDE FLAT, V4A, IP67, edelstahl, round. Flush mounting, Floor-mounted. Mounting method: Flush mounting, Place of installation: Floor-mounted, material: Stainless steel / Aluminium / Glass, IP protection class: according to DIN EN 60529 IP67, Protection class: (EN 61140) III, voltage: 24V, Power: 6W, amount of light sources / fittings: 1.0 Stk, Luminous flux: 420lm, Colour temperature: 3000K, Radiation angle: 20°, without operating, . Diese Leuchte enthält eingebaute LED-Lampen. Die Lampen können in der Leuchte nicht ausgetauscht werden.

Artikel-Nr.	14037223		
Stand:	21.04.2021 08:46		
colour of light	3000 K	Colour rendering	CRI > 80
Colour	stainless steel	Outer diameter	110 mm
Radiation angle	20 °	Built-in diameter	98 mm
amount of light sources / fittings	1 Qty	Built-in depth	35 mm
material	Stainless steel / Aluminium / Glass	voltage	24V
Power	6 W	Max. load	1,000 kg
Lamp type	LED	Impact strength	IK08
shipping	inkl. 1.000 mm Anschlussleitung mit Aquastop und Deckenmontage-Federn	IP protection class	IP67
		Protection class	III
		circuit type	parallel conduction