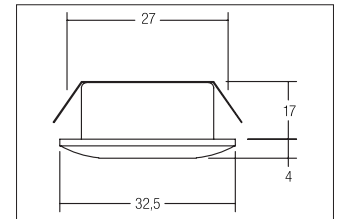


LED light point, IP44

Artikel-Nr. 12071023

LED light point, IP44, chrome, round. In a compact design, for installation in tool-less rapid assembly systems. Lamp holder: Plug&Play, Mounting method: Recessed mounting, Place of installation: Ceiling-mounted, Material: Aluminium / Plastic, Degree of protection: according to DIN EN 60529 IP44*, Protection class: (EN 61140) III, Current: 350 mA, Power: 1.2W, Amount of light sources / fittings: 1.0 Qty, Luminous flux: 70lm, Colour temperature: 3000K, Light colour : White, Beam angle: 30°, Adjustability: Not adjustable, With control gear: No. This luminaire contains incorporated and non-exchangeable LED light sources.

Artikel-Nr. 12071023
Stand: 18.06.2021 07:39

| | |
|------------------------------------|---------------------|
| Colour of light | 3000 K |
| Colour | Chrome |
| Beam angle | 30 ° |
| Amount of light sources / fittings | 1 Qty |
| Material | Aluminium / Plastic |
| Lamp holder | Plug&Play |
| Power | 1,2 W |
| Lamp | LED |
| Colour rendering | CRI > 80 |
| Outer diameter | 32.5 mm |

| | |
|----------------------|-------------------|
| Built-in diameter | 27 mm |
| Installation depth | 17 mm |
| Current | 350 mA |
| Luminous flux | 70 lm |
| Degree of protection | IP44* |
| Protection class | III |
| Adjustability | Not adjustable |
| Height | 3.5 mm |
| Circuit type | Series conduction |