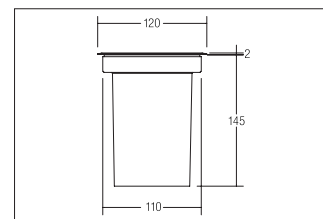
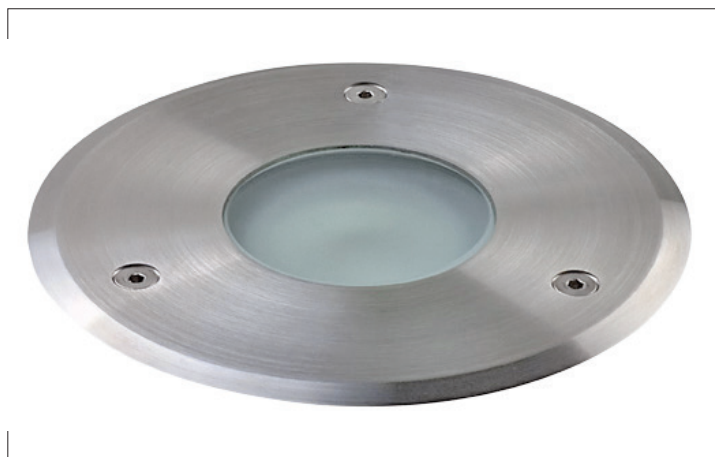


Bodeneinbauleuchte, GU10 (für LED), IP65

Artikel-Nr. 3105

Bodeneinbauleuchte, GU10 (für LED), IP65, edelstahl, round. Flush mounting, Floor-mounted. Lamp holder: GU10, Mounting method: Flush mounting, Place of installation: Floor-mounted, material: Stainless steel / Glass, IP protection class: according to DIN EN 60529 IP65, Protection class: (EN 61140) II, voltage: 230V AC 50Hz, Power: 5,00*W, amount of light sources / fittings: 1.0 Stk, Type of dimming: other, .

Artikel-Nr.	3105
Stand:	25.11.2020 04:17

Colour	stainless steel
amount of light sources / fittings	1 Qty
material	Stainless steel / Glass
version	GU10
Power	max. 5 W
Type of dimming	other
Outer diameter	120 mm
Built-in diameter	110 mm

Built-in depth	145 mm
voltage	230V AC 50Hz
Max. load	1,000 kg
IP protection class	IP65
Protection class	II
Voltage type	AC
Height	2 mm
circuit type secondary side	parallel conduction