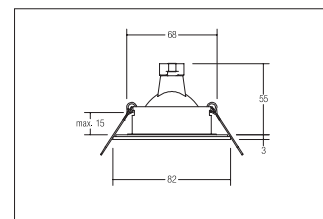


Einbaudownlight, V4A, IP54

Artikel-Nr. 26004220

Einbaudownlight, V4A, IP54, edelstahl, round. In a compact design, for installation in tool-less rapid assembly systems. Lamp holder: GX5.3, Mounting method: Flush mounting, Place of installation: Ceiling-mounted, material: Stainless steel / Glass, IP protection class: according to DIN EN 60529 IP54*, Protection class: (EN 61140) III, voltage: 12V, Power: max. 35W, amount of light sources / fittings: 1.0 Stk, Adjustability: not adjustable, without operating, Type of dimming: other, .

Artikel-Nr.	26004220
Stand:	15.02.2021 20:43

Colour	stainless steel
amount of light sources / fittings	1 Qty
Type of dimming	other
Outer diameter	82 mm
Brackets	5366
Built-in diameter	68 mm
Built-in depth	55 mm
material	Stainless steel / Glass
version	GX5.3

Power	max. 35 W
voltage	12V
Lamp type	LV halogen lamp
circuit type secondary side	parallel conduction
IP protection class	IP54*
Protection class	III
Voltage type	AC/DC
Circlip	without circlip
Adjustability	not adjustable