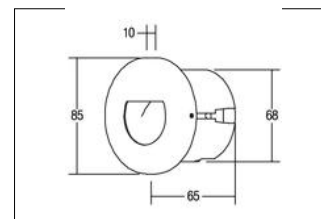


LED-Wandeinbauleuchte

**Artikel-Nr. 10128205**

Licht.  
Für Generationen.



LED-Wandeinbauleuchte, stainless steel, round. Flush mounting, Wall-mounted. Inkl. Konverter zum Anschluss an 230 V-Netzspannung, schaltbar, und Hohlwand-Montagedose Ø DA: 68 mm / Einbautiefe: 65 mm. Lamp holder: without, Mounting method: Flush mounting, Place of installation: Wall-mounted, material: Stainless steel / Aluminium / Plastic, IP protection class: according to DIN EN 60529 IP20, Protection class: (EN 61140) I, voltage: 230V AC 50Hz, Power: 1,2 W, colour of light: 3000 K, Colour of light: white, With operating gear: Yes, Type of dimming: switchable, Energy efficiency class: A++ to A, This luminaire contains incorporated and non-exchangeable LED light sources.

<b>Artikel-Nr.</b>	<b>10128205</b>	<b>Applications</b>
<b>price</b>	112.00 €	HOME   LIVING OFFICE   COMMUNICATION HOTEL INDUSTRY
<b>Stand:</b>	16.07.2019 01:31	GASTRONOMY

Energy efficiency class	A++ to A
colour of light	6500 K
Luminous flux	60 lm
material	Stainless steel / Aluminium /
Colour	edelstahl
Power	1,2 W
Lamp type	LED
Type of dimming	switchable

Built-in diameter	68 mm
Built-in depth	65 mm
voltage	230V AC 50Hz
circuit type secondary side	parallel conduction
IP protection class	IP20
Protection class	I
Voltage type	AC
Diameter	85 mm