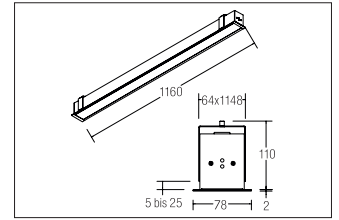
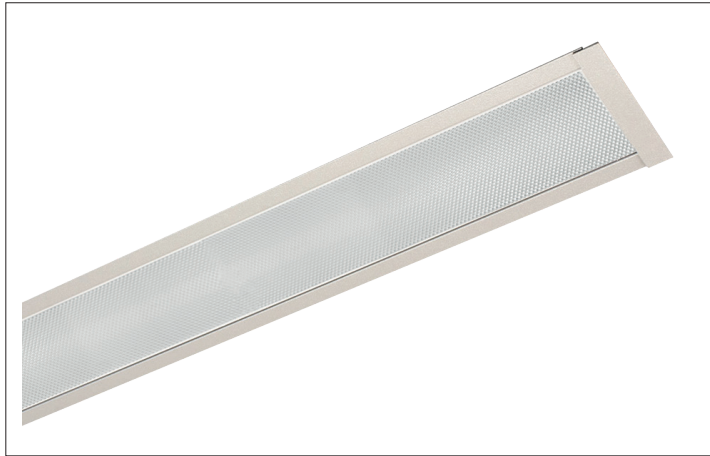


LED-Einbauprofilleuchte BIRO60, mikroprismatische Abdeckung  
**Artikel-Nr. 77001694**



LED-Einbauprofilleuchte BIRO60, mikroprismatische Abdeckung, silber eloxiert. In a compact design, for installation in tool-less rapid assembly systems. Lamp holder: without, Mounting method: Flush mounting, Place of installation: Ceiling-mounted, material: Aluminium / Steel / Plastic, IP protection class: according to DIN EN 60529 IP20, Protection class: (EN 61140) I, voltage: 230V AC 50Hz, Power: 27W, amount of light sources / fittings: 1.0 Stk, Luminous flux: 3.386lm, Farbtemperatur: 4000K, Colour of light: white, Radiation angle: 80°, Adjustability: not adjustable, With operating gear, Type of dimming: switchable, .

<b>Artikel-Nr.</b>	<b>77001694</b>
<b>Stand:</b>	25.11.2020 22:11

colour of light	4000
Colour	silver
Radiation angle	80 °
amount of light sources / fittings	1 Qty
material	Aluminium / Steel / Plastic
Power	27 W
Lamp type	LED
Colour rendering	CRI > 80
glare evaluation	UGR < 19
Type of dimming	switchable
Built-in width	64 mm

Built-in length	1148 mm
Built-in depth	110 mm
voltage	230V AC 50Hz
Luminous flux	3,386 lm
IP protection class	IP20
Protection class	I
Voltage type	AC
Adjustability	not adjustable
length	1165 mm
Width	80 mm
circuit type secondary side	parallel conduction