

BRUMBERG

Light.
For Generations.



Inspirations.

Lighting solutions for residential
and commercial application.

A family business with innovative lighting solutions.

Light. For generations.

Brumberg has been making light and luminaires since 1873. One of its first products was petroleum lamps. Today, Brumberg is one of the leading German lighting manufacturers. The family business, now managed in its fifth generation, develops luminaires for lighting applications, focusing on functional diversity, state-of-the-art technology and energy efficiency – with particular emphasis on LED products.

Brumberg has been making light and luminaires since 1873. One of its first products was petroleum lamps. Today, Brumberg is one of the leading German lighting manufacturers. The family business, now managed in its fifth generation, develops luminaires for lighting applications, focusing on functional diversity, state-of-the-art technology and energy efficiency – with particular emphasis on LED products.

"With the demands and requirements of our customers in mind, we find the right product and service solutions and provide inspiring cooperation and results," says Johannes and Benedikt Brumberg.

With a workforce of around 120 employees based in Sundern, Brumberg is a major employer in the region and far beyond. A strong connection to its local region is just as important for Brumberg as its international commitment. Its mentality is typical Sauerland: Determination, passion and a focus on results, paired with respect for others and a high sense of responsibility. These have been the beacons of Brumberg's dealings with one another for over generations.

The Sauerland region as an inspiration: 24 | 7 | 365.

The forest has always been the purest source of fascination for Brumberg, at any time of year, day or night. In its younger years, this was more or less an unconscious inspiration, today it is much more than that. For Brumberg, the forest is the inspiration for networking, the source of ideas for lighting scenarios and the driving force for product development. The Sauerland-based business has been able to grow its knowledge of the interrelationship of light with humans, nature and the environment on the basis of its deep-founded experience in nature. What was once a playful discovery of fire and light has now become the professional development and manufacture of luminaires for the most various types of buildings, applications and fields of activity. The products and services are based on the Brumberger philosophy: Keeping our ears and eyes open and identifying with the needs and requirements of our customers – this is our daily work. With this in mind, Brumberg finds the perfect products and in terms of cooperation as well as in terms of results. Simply put: Light. For generations.

Further information at: www.brumberg.com

Brumberg follows the lighting and control concepts of various building types and application areas and supplies indoor and outdoor luminaires for the following industries:

Büro | Kommunikation



Shop | Retail



Home | Living



Spa | Wellness



Hotellerie | Gastronomie



Outdoor



Contents



Private apartment, Hamburg Page 8-11

Complete renovation of the Elbchaussee in Hamburg.



Private loft, Berlin

Page 12-15

Redesign of an apartment in a historic building in Berlin.



Private home, Hamburg

Page 16-17

Newly built apartment in Hamburg.



Private home, Emsdetten

Page 18-19

New build, exterior and interior in Emsdetten.

Private home, Norderstedt

Page 20-23

Redesign of living area in Norderstedt.



Private home, Hamburg

Page 24-27

New private home in Hamburg.



Private home, Vreden

Page 28-33

New build, private home, interior and exterior in Vreden.



Hotel Inspire, Munich

Page 34-37

Reconstruction of the hotel in Munich.



Contents



Hotel Seegarten

Page 38-45

Extension loft house and redesign of lobby.



Office K³ Room concept

Page 46-49

New build company headquarters including interior design.



Husemann Law Firm · Eickhoff Salmen & Partner GbR

Page 50-53

Redesign of conference area.



IHK Arnsberg/ VWA Hellweg-Sauerland

Page 54-59

Seminar room redesign.

The Bernstein, Bielefeld

Page 60-64

Complete renovation.



VdK-Hotel Bad Fredeburg

Page 65-67

Renovation of the dining hall.



Kotte Tischkultur

Page 68-69

Renovation on two floors.



Borussia Mönchen Gladbach

Page 70-75

Expansion of the Borussia Park.



Private apartment, Hamburg.

Complete renovation Elbchaussee.

As managing director of the Bernesto Group and Bernesto Card GmbH & Co. KG, Benjamin Ernst travels a lot all over the world. At home, he wants to recover from the stresses and strains of his travels. Proper lighting plays a decisive role in this. Brumberg therefore provided the Hamburg-based businessman comprehensive advice on the complete refurbishment and redesign of his apartment on Elbchaussee. In addition to planning, the Sauerland company also implemented the lighting concept in all of the rooms of the property. The interplay of light, interior design and the tasteful interior results in an extremely pleasant living atmosphere. The KNX control makes it easy to activate various lighting scenarios which always provide the right light for any time of day or night and for different daylight and living situations.



The Brumberg LED surface-mounted ceiling luminaire QUBIC, which has received the Red Dot Award, fits exactly into the room dimensions and stands out thanks to its impressive light.

Brumberg develops lighting concept for Elbchaussee apartment

Benjamin Ernst has to travel a lot professionally. As managing director of his companies Bernesto Group and Bernesto Card GmbH & Co. KG he works all over the world. That's why it was important to him to create a lighting atmosphere during the complete renovation and redesign of his Hamburg apartment on the Elbe that would allow him to arrive and relax after returning from his long journeys. In addition, he has chosen a very modern, reduced furnishing style with a lot of white space, which radiates a sense calm and a focus on the essentials. Light therefore played a fundamental role in the interior design. Above all, it should be flexible and always provide the right setting for any time of day or night and for different daylight and living situations. In addition, the design language of the luminaires used should match the property's sophisticated interior design.

Lines and light in harmony

Based on these specifications, Brumberg developed a detailed lighting concept for the entire apartment and its two terraces. In order to be able to make dynamic use of the light in the room, Brumberg first installed a KNX control system in cooperation with its partner Gira. This means that an individual lighting scenario can be activated in every situation.

"We were able to make full use of the broad Brumberg spectrum when selecting the illuminants. It was important to us that form and function go hand in hand", says the Brumberg lighting planner explaining their approach. The QUBIC LED surface-mounted ceiling luminaire, for instance, complements the lines of the rooms, which are characterized by recesses and protrusions. It blends harmoniously into the room and impresses with its interplay of direct and indirect light.



Private apartment, Hamburg.

Complete renovation Elbchaussee.

Another highlight of the lighting design is the use of several BOMAC LED wall luminaires. Like small lighthouses, they cast their light through special crystal glass lenses into the room and onto the wall. The 20 square metre walk-in wardrobe is equipped with TunableWhite QualityFlex® LED flex boards. The advantage: You can choose the clothes in the right light for the occasion. For night-time orientation, LED luminaires are recessed into the wall just above the floor. This enables house occupants to move around safely in the apartment without waking up to excessive bright light.

Profile

Project: Complete renovation of the apartment on Elbchaussee, Hamburg

Client: Benjamin Ernst

Light planning: Martin Koschinsky, Brumberg

Installer: n.a.

Products: Indoor and outdoor luminaires, LED surface-mounted ceiling luminaire QUBIC, LED wall luminaire BOMAC 4.6, TunableWhite LED flex boards QualityFlex®, Circle surface-mounted LED wall luminaires, LED orientation luminaires, LED recessed floor luminaires

Scope: Consulting, planning, product delivery, fine tuning

Photographer: Henrik Schipper



The Brumberg BOMAC and Circle LED wall luminaires cast impressive light imagery on the wall.



Private loft, Berlin.

Redesign of an apartment in a historic building.

Profile

- Project:** Private loft Berlin
- Architect:** STP-Architekten Schlimpert und Thaeter
- Client:** n.a.
- Light planner:** STP-Architekten und Gerhard Albrecht GmbH
- Installer:** Gerhard Albrecht GmbH
- Products:** LED recessed spotlight dim2warm,
LED surface-mounted spotlight (12063173)
- Photographer:** Tobias Hein









Private home, Hamburg.

Newly built apartment

Profile

Project: Newly built apartment in Hamburg

Architect: Mario Hilbricht

Light planner: Mario Hilbricht
(Brumberg Competence Partner)

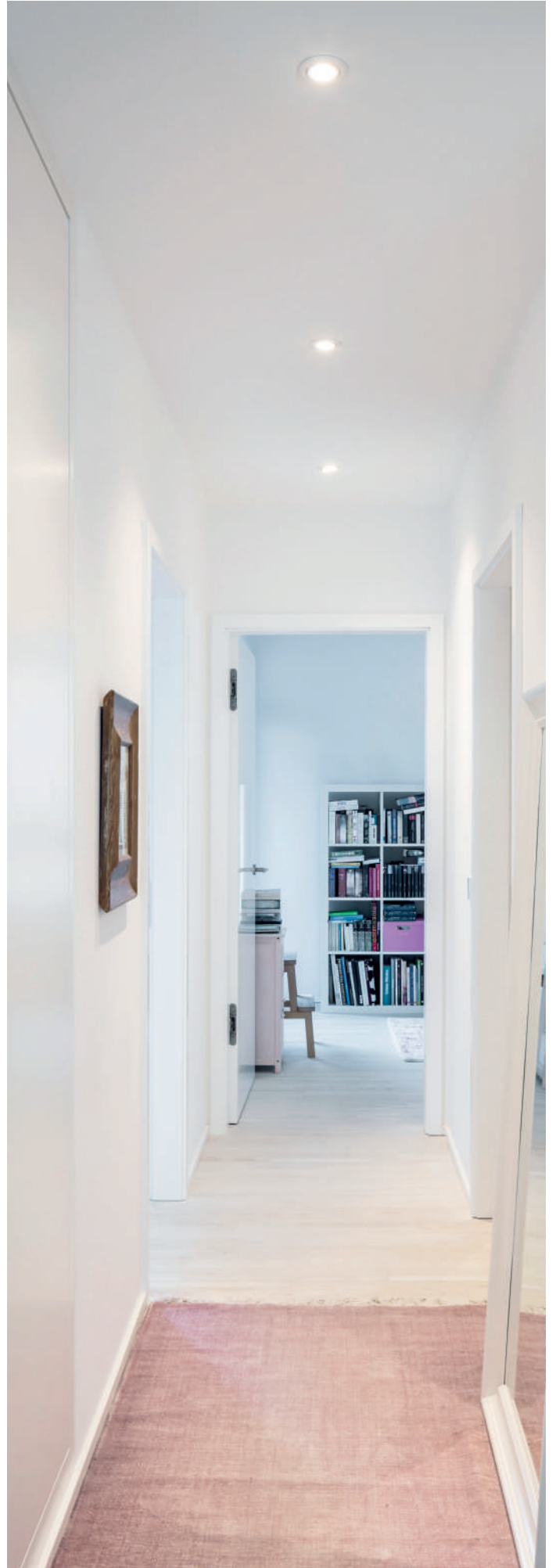
Installer: Mario Hilbricht

Products: dim2warm, vitalLED®

Scope: Consulting, product delivery

Photographer: Henrik Schipper





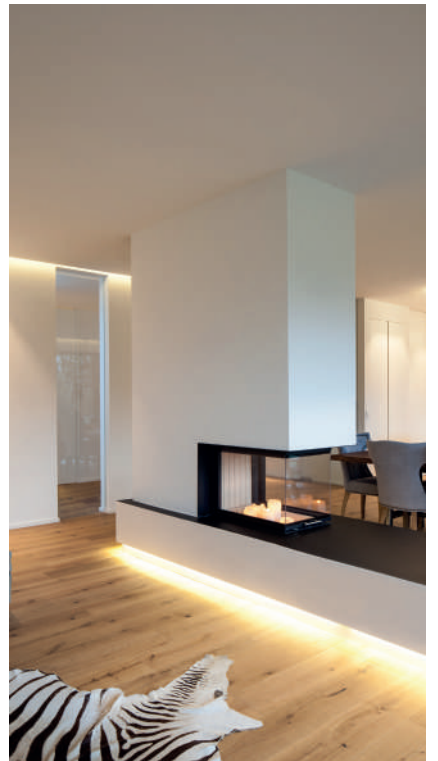
Private home, Emsdetten.

New build, interior and exterior.

Profile

- Project:** New build in Emsdetten
- Architect:** Anja Engelshove (architect),
Jochen Engelshove (structural engineer,
site manager)
- Light planner:** Engelshove Bau GmbH
- Installer:** Biegler und Plett from Nordwalde
- Products:** LED recessed spotlights, recessed wall
luminaires, surface-mounted LED wall
luminaires
- Scope:** Consulting, planning, product delivery
- Photographer:** Henrik Schipper





Private home, Norderstedt.

Redesign of living area.

This project was a particular challenge for lighting designer Mario Hilbricht from Norderstedt. As part of the redesign of this living area, the client wanted dynamic lighting that could be adapted to various daylight situations and room uses. Whether by the fireplace in the winter or television evenings in front of the large flat screen, the lighting had to provide a cosy atmosphere. The Brumberg QualityFlex® Select LED flex boards in combination with the vitaLED® 2.0 system create a spectacular result. The living area is accentuated with a luminous ceiling that adapts flexibly to the colour requirements of the residents. Brumberg LED recessed spotlights provide a warm white background light.



The combined Brumberg lighting solutions QualityFlex® Select and vitaLED® provide the appropriate individual lighting mood.

Living room presentation

In cooperation with Brumberg Leuchten, Mario Hilbricht developed a flexible lighting concept for the redesign of this living room, which coordinates the artificial lighting with the natural light entering through the large terrace window area. He designed suitable lighting scenarios for cosy evenings by the fireplace and for watching TV. He also had to accommodate the modern, playful interior design. An essential design element of the room is its consistent horizontal lines, which are additionally emphasised by just the right lighting.

QualityFlex® Select and vitaLED® for dynamic light

The highlight of this project is the interaction of Brumberg's QualityFlex® Select and vitaLED® lighting solutions. The LED flex boards are integrated into the lighting covers of the room via matching, thermally controlled aluminium profiles. The advantage: Colour and brightness can be dynamically adjusted. The spectral control of vitaLED® enables individually adapted healthy light that supports well-being and performance.



Private home, Norderstedt.

Redesign of living area.

The intelligent lighting system allows individual adaptation to moods or needs. It can also activate or accompany rest periods. The QualityFlex® Select LED flex boards are controlled as vitaLED® 2.0 colour ribbon via a vitaLED® 2.0 DALI control module in combination with a vitaLED® 2.0 distributor for flex boards. While the Brumberg LED recessed spotlights give the room a very pleasant, warm white basic light, the LED flex boards create the desired atmosphere with various colours and brightness levels.

The concept is supported by warm white light, which shines into the room from a furniture showcase and three glass showcases recessed into the wall. Here, too, LED flex boards are used, which are unobtrusively integrated and impressively set the stage for the furniture.

Profile

Project: Redesign of living area, private house in Norderstedt

Architect: Mario Hilbricht

Light planner: Mario Hilbricht, Elektro-Hilbricht GmbH (Brumberg Competence Partner)

Installer: Mario Hilbricht

Products: LED flex boards QualityFlex® Select as vitaLED®-2.0 colour ribbon (18503002 and 18523002), vitaLED® 2.0 DALI control module, vitaLED®-2.0 distributor for flex boards (18302000), aluminium profile (15752260), LED recessed spotlight (12026073)

Scope: Consulting, product delivery

Photographer: Henrik Schipper



The interaction of the various light sources creates a highly pleasant light in the room that accentuates the interior design.



Private home, Hamburg.

New build private home.

Profile

- Project:** New build private home in Hamburg
Architect: n.a.
Light planner: Mario Hilbricht, Elektro-Hilbricht GmbH
(Brumberg Competence Partner)
Installer: Mario Hilbricht
Products: LED recessed spotlight
Scope: Consulting, product delivery
Photographer: Henrik Schipper









Private home, Vreden.

New building exterior and interior.

The architecture and engineering firm Engelshove Bau GmbH based in Neuenkirchen near Münster specialises in sophisticated residential and commercial buildings in North Rhine-Westphalia and Lower Saxony. The task for the collaboration in the new building in Vreden: To develop a lighting concept that particularly accentuates the sophisticated architectural design of the property. Lighting planner and Competence Partner Stefan Winkelhaus therefore advised his client to install Brumberg luminaires throughout the building.



Brumberg lighting solutions (recessed LED spotlights, surface-mounted LED wall luminaires) also support the distinctive Engelshove architectural style in outdoor areas.

Elegant lighting solutions for modern architecture

In modern new buildings in particular, light must reflect the basic architectural concept and set the scene. Lighting designer Stefan Winkelhaus recommended Brumberg's lighting solutions to meet the client's many different requirements. The Sauerland company supplied luminaires that optimally implemented the basic theme of this design: The interaction of light and shadow, light and dark surfaces. By alternating large window areas and dark façade parts, the building opens and closes in equal measure.

Pleasantly bright throughout

The continuous light axis from the entrance over the kitchen and the terrace into the garden is a special highlight of the project. It was important to design the lighting so that it produces a pleasantly bright light colour. The combination of matching LED surface-mounted wall luminaires and recessed spotlights for the façade and entrance area of the building resulted in an appealing reception area. LED surface-mounted wall luminaires made of aluminium are truly captivating due to their special structural graphite housing design. The light has a direct and indirect component, the light output for the upper and lower light cone can be variably adjusted.



A successful interplay of daylight, outdoor lighting and direct and indirect indoor lighting (LED recessed spotlights, LED flex boards QualityFlex®).

Private home, Vreden.

New building exterior and interior.

The most important room for the lighting design was the open kitchen and dining area with an adjoining terrace. The large windows facing the garden provide plenty of daylight. In the evening hours, numerous Brumberg LED recessed spotlights provide a very pleasant warm white room light (2,700 K), which also illuminates the terrace if required. A suspended ceiling is used to visually delimit and define the kitchen as a work area in the room. QualityFlex® LED flex boards complement the lighting concept here and add atmosphere to the room with their indirect light.





Private home, Vreden.

New building exterior and interior.



Profile

- Project:** New build, private home, interior and exterior design
- Architect:** Jochen Engelshove
- Light planner:** Anja Engelshove, Engelshove Bau GmbH
- Installer:** Winkelhaus GmbH from Legden
- Products:** LED recessed spotlights, recessed wall luminaires, surface-mounted LED wall luminaires
- Outdoor:** LED recessed spotlights, surface-mounted LED wall luminaires
- Scope:** Consulting, light planner, product delivery
- Photographer:** Arnt Haug / Henrik Schipper





Innspire, Munich.

Smart control for More comfort.

The contract with the Innspire Hotel in Munich was clearly formulated: The hotel and above all the rooms were to be digitally controllable, all functions coordinated and all brands and trades networked. The lighting was a decisive factor. Brumberg therefore planned and implemented the lighting in the rooms and suites, the spa, the restaurant and the lobby.



Smart control, more comfort

The Innspire Hotel Munich is a smart boutique and design hotel with 34 rooms, 6 suites and a high-quality spa and wellness area. The hotel offers its guests digitally networked entertainment and lighting solutions in the rooms and other areas of the hotel. The controls are simply made via iPad, which every guest receives at check-in. If desired, programmed scenarios such as "TV", "Lights off", "Relax" and "Work" can be called up via the tablet. The prestigious lounge and the restaurant with vinothèque have an impressive modern furnishing concept, innovative lighting and offer culinary highlights.

The right light for every mood.

In the Innspire Hotel, the operator relies on synchronized functions and intelligent operating concepts. Thanks to Connected Comfort, various applications can be controlled

on the iPad at the touch of a finger. The guest can individually control the room fittings, the entertainment system or the lighting. Lighting in particular plays an important role in this home away from home: Light creates moods, has an activating or relaxing effect and thus enhances productivity as well as resting periods – depending on the guest's specific needs. With QualityFlex® and dim2warm, Brumberg as lighting partner creates the perfect atmosphere with intelligent solutions both in the rooms and in the spa and wellness area of the hotel. With colour temperatures that can be adapted to the biorhythm, Brumberg supports hotel guests in their daily routine. The Connected Comfort App also enables quick paperless check-in and also serves as a key card. Another advantage for hotel operators: Scenarios can be adapted, smart devices added and security settings updated at any time.



In the spa area, QualityFlex® RGBW creates a relaxing atmosphere and promotes well-being.

Innspire, Munich.

Smart control for More comfort.

Profile

- Project:** Innspire Hotel, Munich
Client: Mr. Herrmann, AG Bau München GmbH
Architect: AG Bau München GmbH
Light planner: Brumberg Leuchten
Installer: Mario Hilbricht
Products: vitaLED® 2.0, TunableWhite, RGB colour light, dim2warm, wall illumination, QualityFlex®, outdoor lighting
Scope: Consulting, planning, product delivery, fine tuning



LED downlights provide the basic lighting, the backlighting of bed and television with QualityFlex® ensures a pleasant atmosphere.



Hotel Seegarten.

Loft house extension and redesign of the lobby.

The project to extend the loft house and redesign the lobby in the Hotel Seegarten had a clear goal in mind: The aim was to create a "house of full of living spaces" that would be popular with business people and holidaymakers alike. With the help of a clear lighting concept, Brumberg succeeded in highlighting the cosy ambience in an exclusive design language with a staging light. To achieve this, the lighting experts from Sundern relied above all on a combination of direct and indirect light with the QualityFlex® LED flex blanks and LED recessed panels.



Light for the loft house and lobby.

Olaf Baumeister is not only a WDR television chef and gin creator, but he is also managing director of the Hotel Seegarten in Sundern on Lake Sorpe. For him, the focus in the design was on strong design and unusual furnishing materials. For otte nöcker planung, Architekten + Ingenieure, ideal conditions for creative implementation. The aim of the project was to design a "house of full of living spaces" exclusively with materials and products from the region and to cooperate with partners from the Sauerland region and North Rhine-Westphalia, such as Brumberg Leuchten. The result is quite impressive.

Brumberg lighting concept and luminaires.

This project was a special task for Brumberg, as in coordination with the client, architects and the local craftsmen, light was to be brought into the finely designed rooms. The focus here was on creating a pleasant atmosphere for the guests in the lofts, in the lobby and in the spa area. The lighting therefore had to emphasise and showcase the interior design with its stylish furnishings. To achieve this, Brumberg opted for a combination of direct and indirect light. The basic light in the lobby and lofts is provided by QualityFlex® LED flex boards embedded in niches and ceilings.



Daylight, floor lamps and QualityFlex® LED flex boards greet hotel guests in the lobby with a very warm and cosy light.

Hotel Seegarten.

Loft house extension and redesign of the lobby.

The bright, warm light creates a harmonious atmosphere. Brumberg's LED surface-mounted ceiling luminaires combine the matt black of the cubic housing with elegant matt gold on the inside. The result: Pleasant lighting scenarios throughout all rooms.

It is a bright yet warm light that creates a harmonious atmosphere. The very stylishly appealing Brumberg LED surface-mounted ceiling luminaires are also used. These combine the matt black of the cubic housing with a refined, matt gold inside. The result is consistently pleasant lighting scenarios in all rooms.



The combination of direct (LED built-in panel) and indirect (LED flex boards QualityFlex®) lighting creates extremely pleasant lighting scenarios in the lofts.







Hotel Seegarten.

Loft house extension and redesign of the lobby.

Profile

- Project:** Extension of loft house and redesign of lobby
- Architect:** otte · nöcker · planung,
Architekten + Ingenieure, Sundern
- Client:** Hotel Seegarten, Baumeister
GmbH & Co.KG, Sundern
- Light planner:** Brumberg GmbH & Co. KG
- Installer:** Meschede und Co.
- Products:** LED flex blanks QualityFlex®, vitaLED®
LED surface-mounted ceiling luminaire (12073183)
- Scope:** Consulting, light planner, product
delivery
- Photographer:** Niklas Thiemann





K³ Raumkonzept.

New build company headquarters including interior design.

A very modern, extravagant architecture was in the focus of the complete new construction of this company headquarters. The aim was to transpose the lines of the building into the interior and to support the white interior with contrasting luminaires and neutral white LED light. This was achieved by using a Brumberg surface-mounted LED ceiling luminaire (12075183), which was converted from 3,000 K to 4,000 K especially for this project. This intensified the room effect and at the same time achieved good workplace illumination.



Warm white light (3,000 K) from Brumberg surface-mounted ceiling luminaires (12075183) in the entrance area and neutral white light (4,000 K) in the work areas.

A statement for room concepts.

During the planning and construction phases of the new company building, K3 Raumkonzept from Bedburg-Hau focused throughout on clarity in architecture and interior design. The interplay of transparency with glass surfaces, targeted lighting and concrete accentuates the rooms. The upper floor is wedge-shaped on the ground floor - draws views into the interior and provides a view outside. The design comes from Planwerkstatt, an internationally active specialist for brand architecture. K3 took up the language of building design with its asymmetries and translated it into the interior. White ceilings, walls and floors shape the character of the rooms. Dark doors and shelves as well as wooden objects create deliberate contrasts. Material, form and surfaces are thus authentically accentuated.

Neutral white for optimum working conditions

K3 engaged Weykamp Elektrotechnik from Kleve for the lighting design and set the tradesmen the task of finding a lighting solution that would do aesthetic and functional justice to the demanding project. Thus, the decision-makers ruled out the use of standard work lighting, such as louvre luminaires, from the very start. The Brumberg LED surface-mounted ceiling luminaires (12075183) can be excellently integrated into the lines and set dark accents in the white room. For optimum ergonomic working conditions, LED surface-mounted ceiling luminaires were equipped with 4,000 Kelvin, neutral white LED light sources.





K³ Raumkonzept.

New build company headquarters including interior design.

The result is an efficient and effective lighting solution that provides perfect support both indoors and outdoors and at the same time ensures glare-free working light. The rooms thus offer users and visitors a comfortable atmosphere in which to work and visit. For the observer, the lighting creates a welcoming appeal because it can be seen from afar that this building is a true statement for room concepts.

Profile

- Project:** New build company headquarters including interior design.
- Architect:** Planwerkstatt, Bedburg Hau
- Client:** K³ Raumkonzept, Bedburg Hau
- Light planner:** Weykamp Elektrotechnik, Kleve
- Installer:** Jörg Weykamp - Kleve
- Products:** Surface mounted ceiling luminaire (12075183) in 3,000 K and 4,000 K, LED conv. 350mA
- Scope:** Consulting, product delivery, product adaption
- Photographer:** Dirk Wilhelmy



The Brumberg surface-mounted LED ceiling luminaires (12075183) optimally enhance the effect of the white space and illuminate glare-free workplaces.

Husemann · Eickhoff · Salmen & Partner GbR.

Redesign of conference area.

The lighting concept played a central role in the redesign of the conference area of the commercial law firm Husemann · Eickhoff · Salmen & Partner GbR. The aim was to give the spacious rooms a special, very pleasant atmosphere with an elegant colour concept and minimalist furnishings. This was achieved by skilfully incorporating indirect lighting via Brumberg QualityFlex® LED flex boards, some of which were combined with recessed LED panels to achieve the homogeneous illumination of the rooms.



The corridors are uniformly illuminated by indirect lighting provided by QualityFlex® LED flex boards.

Straightforward and harmonious in one.

During the redesign of the conference area of the commercial law firm Husemann · Eickhoff · Salmen & Partner GbR the aim was to create a modern, clear ambience,

in which people feel at ease. The architects' firm Areal Consulting aimed for spacious, inviting rooms. The large conference rooms are furnished with spacious conference tables, designer seating and discreet cabinet elements. During the development of the office lighting concept by Brumberg, flexible, efficient and intelligently controllable lighting solutions were the main focus, depending on the specific room type. This provided plenty of space for the essentials – the joint development of ideas and concepts, the discussion of projects and procedures.

Light and acoustics.

The corridors are very pleasantly and homogeneously illuminated by QualityFlex® LED flex boards.

The highlight in the truest sense of the word is the central paint stretch ceiling, which serves as a screen for the LED flex boards. Here it was possible to install the individual LEDs concealed and without any shadow effects thanks to precision work in implementation. The stretch paint ceiling is embedded in a plasterboard perforated ceiling, which provides very pleasant and quiet acoustics. The perforated ceiling conceals the surrounding QualityFlex® LED flex blanks, which indirectly radiate light onto the walls. The concept of the plasterboard perforated ceiling was also implemented in the conference rooms.



Husemann · Eickhoff · Salmen & Partner GbR.

Redesign of conference area.

Above the large conference tables, the ceiling is cut out in a rectangular shape to allow LED flex boards to be used here as well and to create the effect of indirect lighting. This soft basic light is supported by energy-efficient LED recessed panels that perfectly illuminate the room around the table. The result is a highly pleasant atmosphere in the rooms, which was also intended and consistently implemented in the spatial planning, interior design and lighting concept.

Profile

- Project:** Redesign of the conference area
Architect: Areal Consulting GmbH, Main
Client: Husemann · Eickhoff · Salmen & Partner GbR, Dortmund
Light planner: Brumberg GmbH & Co. KG
Installer: ESD-Technik Sulk
Products: LED flex boards QualityFlex®, LED built-in panel (12015073), recessed cardanic spotlights
Scope: Consulting, light planner, product delivery
Photographer: Henrik Schipper





Chamber of Commerce Arnsberg/ VWA Hellweg-Sauerland.

Seminar room redesign.

The focus of this project was the modernization and redesign of the seminar rooms of the Administration and Business Academy Hellweg-Sauerland. The aim was to create rooms with multiple use as seminar, conference and event rooms. The use of the Brumberg lighting concept vitalLED® played a key role in the implementation. The RGBW colour light enables different room utilisation through different, easily controllable light scenarios.



Motivated learning in the right light.

How can standard seminar rooms of an academy be transformed into lively learning landscapes? How do you break away from rigid room concepts and equip rooms with flexible use and pleasant surroundings? The Arnsberg architectural firm Keggenhoff | Partner had to answer these questions in a challenging modernization project of the Chamber of Commerce Arnsberg. The existing seminar rooms of the Administration and Business Academy Hellweg-Sauerland had to be rebuilt in such a way that they could be easily redesigned for various purposes. Sliding walls instead of fixed walls initially created the variability in terms of room size. In order to be prepared for various events ranging from seminars and company workshops to evening events, the decision was made to use intelligent light and lighting.

vitaLED® for more concentration.

Learning in a modern working environment. For the students of the VWA Hellweg-Sauerland, this often means that they attend their seminars on weekends or in the evening after work is done. In this case it is good to be able to learn with full concentration and efficiency. With this in mind, the architect Prof. Dipl.-Ing. Sabine Keggenhoff wanted the Brumberg Vitalicht vitaLED® from her lighting designers (Gebro Herwig Engineering, Arnsberg). This has a decisive advantage: In addition to the RGB colour space (red, green, blue), the RGBW colour light enables stepless control of the white light (from 2,000 K to 10,000 K). This allows the blue light components in the white light, which are important for the concentration and performance of the human organism, to be optimally controlled.

If the seminar rooms are to be converted into event rooms for evening events, the vitaLED® control and light sources can be used to implement and activate various colourful, atmospheric scenarios. In interaction with light beamers and moving heads, impressive lighting scenarios are created that have convinced and inspired the clients. In this project, Brumberg supplied the control system and the illuminants. Because the latter had to be installed in existing luminaires as part of the modernization, Brumberg developed a special adapter ring.

The overall concept has demonstrated its worth in practice. The rooms can now be used in a much more varied way and the feedback from the students is also extremely positive. This project is a prime example of what can happen when architecture, planning and lighting design go hand in hand.

Profile

Project:	Seminar room redesign
Architect:	Keggenhoff Partner, Arnsberg
Client:	Chamber of Commerce Arnsberg, Arnsberg
Light planner:	Keggenhoff Partner, Arnsberg
Installer:	Gebro Herwig Engineering, Arnsberg
Products:	vitaLED®
Scope:	Product delivery, product adaptation
Photographer:	Constatin Meyer

Chamber of Commerce Arnsberg/ VWA Hellweg-Sauerland.

Seminar room redesign.





Chamber of Commerce Arnsberg/ VWA Hellweg-Sauerland.

Seminar room redesign.





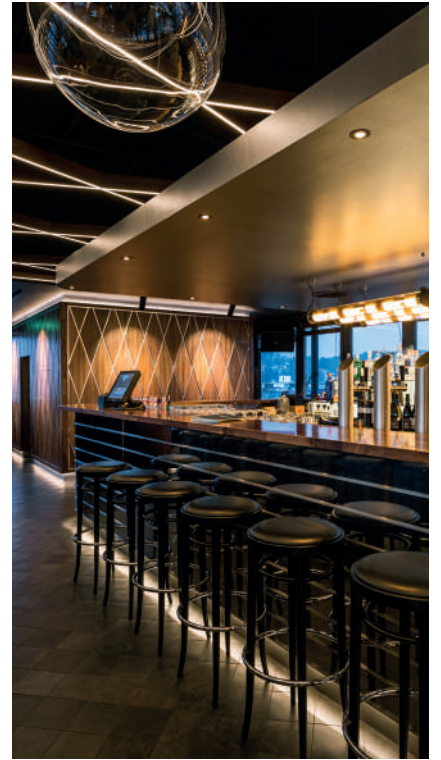
Restaurant The Bernstein, Bielefeld.

Complete renovation.

Profile

- Project:** Complete renovation
Architect: Andreas Georg Hanke, Dortmund
Client: Living Food Achim Fiolka
Light planner: Andreas Georg Hanke, Dortmund
Installer: Elbrächter Elektrotechnik, Bielefeld
Products: Dim2warm, Flex boards
Scope: Consulting, product delivery
Photographer: Henrik Schipper











VdK-Hotel in Bad Fredeburg.

Conversion of the dining hall.

Profile

Project: Renovation of the dining hall
Architect: Kotthoff Architects and Surveyors
Light planner: Kersting Objekteinrichtung
Installer: Elektro Föster GmbH
Products: vitaLED®, recessed spotlight

Scope: Consulting, light planner, product delivery
Photographer: Henrik Schipper



VdK-Hotel in Bad Fredeburg.

Conversion of the dining hall.





Kotte Tischkultur, Dortmund.

Renovation on two floors.

Profile

Project: Kotte Tischkultur, Dortmund

Architect: Karin Kühling

Client: Christiane Ranke-Dornbracht and
Ann-Kristin Dornbracht

Light planner: Martin Schulte (Brumberg)

Installer: Elektra Brinkmann, Dortmund

Products: Ring lights, ModulMax® rail mounted
spotlights, ModulMax® recessed
spotlights

Scope: Consulting, light planner, product
delivery

Photographer: Henrik Schipper





Borussia 8-degree building complex in Borussia Park.

Expansion of the Borussia Park.

Borussia Mönchengladbach, the Bundesliga football club, has entrusted Brumberg Leuchten as the stadium and lighting partner of the club with the entire lighting design and implementation of the Borussia 8-degree building complex in the Borussia Park - a project that many lighting designers can only dream of. As general lighting contractor, Brumberg was the central contact for the project and was able to contribute to the impressive overall result with the experience of its lighting specialists, the entire product range and creative lighting solutions. Lights on in the Borussia Park!

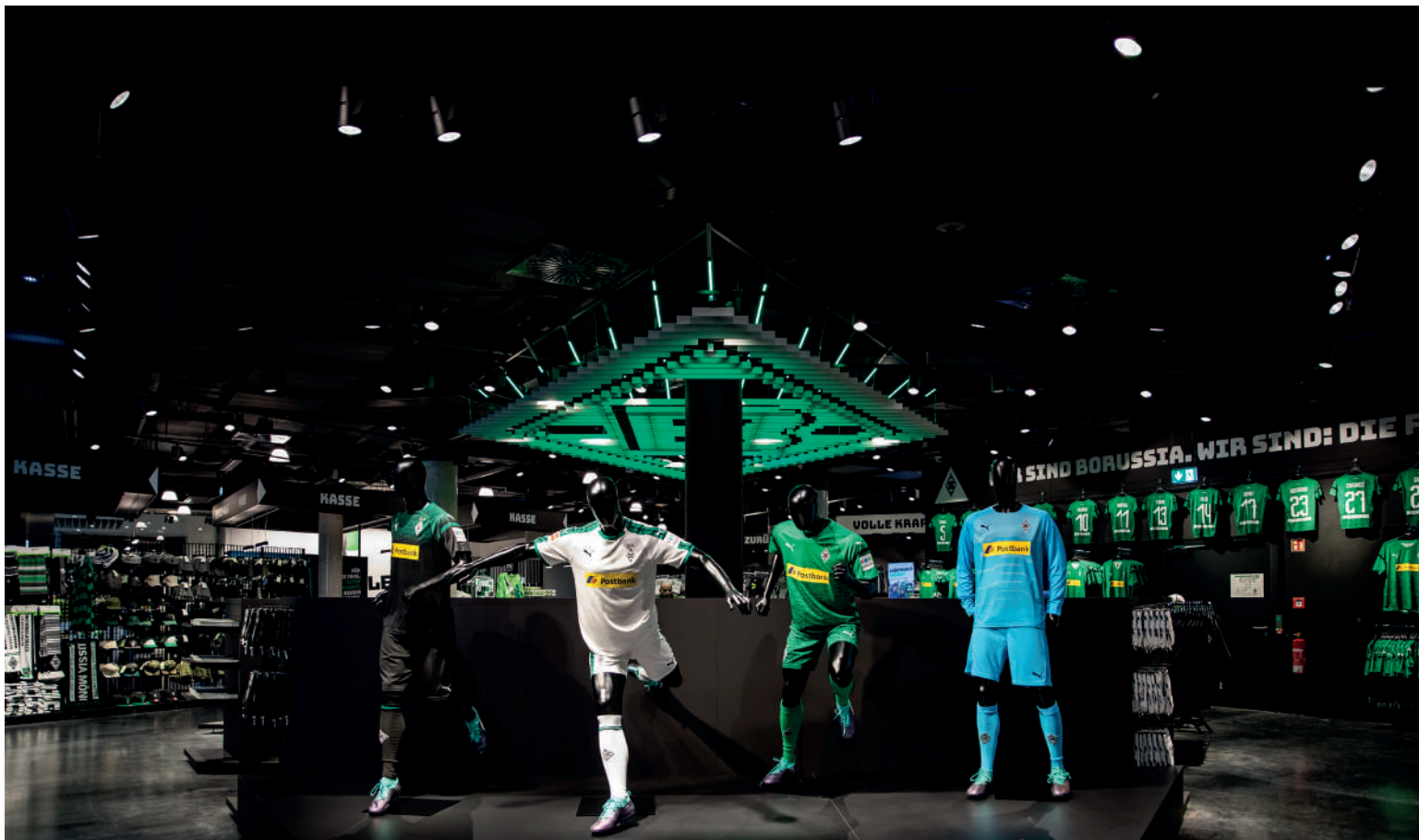




Brumberg designs the lighting solution in the Borussia 8-degree building complex

It was a special honour for Brumberg Leuchten to be part of this project as a stadium and lighting partner of the traditional Borussia Mönchengladbach association. When the lights go on in the 16,000 square metres of the newly built Borussia 8-degree building complex, the entire Brumberg range truly shines.

"It was definitely a massive planning task to implement this complex project in the various building and functional areas. The long list of rooms and building parts that we equipped and staged with light illustrates just that: The sports bar "Büchsenwurf", the players' cabin, the players' tunnel, the Speelersroom lounge, the H4 Hotel in Borussia Park including wellness area, the physician's practice on the first floor of the new building, the fan shop on the ground floor of the new building, the boarding school "Fohlenstall", the physiotherapy practice, the business lounge, the apartments for players, the new construction of the kitchen system as well as the "Bökelberg" memorial in the city of Mönchengladbach", summarises Johannes Brumberg. "We are proud to be able to show that, as a comparatively small company from the Sauerland region, we have the capacities and the creative solutions to successfully implement a project of this magnitude," adds Benedikt Brumberg.





Borussia 8-degree building complex in Borussia Park.

Expansion of the Borussia Park.

Special lighting accents right into the players' area

Brumberg had to harmonise the atmosphere, the natural light coming in through the large window fronts and the artificial lighting accents to give the large room an appealing appearance. After all, guests and fans alike should feel equally at home here. For this reason, Brumberg's lighting specialists initially used ModulMax track-mounted spotlights and dim2warm LED recessed spotlights to provide a pleasant basic illumination. The decorative pendant luminaires with glass spheres above the counter and cardboard shades in various shapes and

sizes set special lighting accents in the room. One highlight is the impressive concrete luminaires above the tables. But Brumberg Leuchten's expertise was not only in great demand in the guest area, but also in the club's sacred halls: The players' cabin. Where the young stars usually prepare for their Bundesliga and European League appearances. Green LED flex band brings the club colour into the cabin, LED recessed luminaires set accents in the players' dressing alcoves and illuminate the jerseys. Recessed LED downlights in the ceiling provide basic lighting.





The diamond in the light of Brumberg

In addition to the many innovative Brumberg LED luminaires, which efficiently and attractively illuminate the Borussia 8-degree building complex, there was another particularly emotional project highlight: The staging of the club logo in the connecting corridor between the stadium and the hotel. Whoever sets off for the game is sworn in to the 'foals' by the logo shining in the club colours. For this purpose, Brumberg has specially produced profile sections of the Brumberg vitaLED® 2.0 (LED flex board RGBW) between the ceiling slats. Measuring 4.6 x 5.4 metres, the diamond creates an impressive visual effect.

Brumberg and Borussia Mönchengladbach share a long tradition, which is a success story in both cases. While the foals have been on the road to success in the Bundesliga for years, Brumberg has established itself as one of the leading lighting manufacturers in Germany with its innovative lighting solutions.

Profile

Project:	New construction of the Borussia 8-degree building. New building Santander 'foal stable' boarding school New construction of a warehouse
Architect:	slapa oberholz pszczulny sop GmbH & Co. KG, Düsseldorf Dälken Ingenieur gesellschaft mbH, Georgsmarienhütte Feies Planungsgesellschaft mbH, Düsseldorf Geplan Design, Stuttgart Iorenz dix architekten PartGmbH, Düsseldorf, Uli Jetzt Lichtplaner, Stuttgart WillyC. Randerath, ARCHITEKT BDB AKNW, Niederkrüchten Arch22 Bogenrieder Crumbach Kugel Architekten Partnerschaft, Stuttgart
Client:	Borussia VfL 1900 Mönchengladbach GmbH
Light planner:	BRUMBERG Leuchten GmbH & Co. KG
Installer:	Siemens AG,
Products:	The complete Brumberg range, Indoor and outdoor, special solutions
Scope:	Consultation of the client, GU Licht, Planning services, lighting planning and calculations, selection of products and sampling, technical support of the installer
Photographer:	Christian Verheyen



BRUMBERG

PREMIUM MARKEN
Partner



BRUMBERG Leuchten GmbH & Co. KG
Hellefelder Str. 63 | 59846 Sundern (Germany)
Phone: +49 (0) 29 34 / 96 11 0 | Fax: +49 (0) 29 34 / 96 11 96
info@brumberg.com | www.brumberg.com

BRUMBERG products are only available from your electrician. According to DIN VDE 0100, electrical devices may only be installed and approved by a qualified electrician.